

# The Kapers

Issue #21 26th May 2026

## INSIDE THIS

### ISSUE...

BENDIGO BANK VISIT  
TO KALANNIE

LADIES DAY &  
NINETIES NIGHT

KALANNIE BOWLS  
AGM

NEW STONE  
MEMORIAL WALL

EID WORKSHOP AT  
CRC

GRANTS OPEN FOR  
SHEEP PRODUCERS  
& LIVESTOCK  
TRANSPORT

MELISSA PRICE -  
OVER 65's PRIVATE  
HEALTH

CONSUMER WATCH

REGIONAL, RURAL &  
REMOTE HOME CARE  
WORKFORCE

SPORT - FOOTY  
RESULTS

ALL ROUND 6  
RESULTS

.....AND MORE

**ALL IN**

**FOR RECONCILIATION**

NATIONAL  
RECONCILIATION  
WEEK 2026

27 MAY - 3 JUNE

**TAKE ACTION**

**MAKE CHANGE**

#NRW2026

RECONCILIATION.ORG.AU

RECONCILIATION  
AUSTRALIA

25 YEARS OF  
RECONCILIATION  
AUSTRALIA

# The Kapers is produced by the Kalannie Community Resource Centre

Phone: 96662194

Email: [kalanniecrc@kalannie.com.au](mailto:kalanniecrc@kalannie.com.au)

## Opening Hours

Mon - 9.30am - 4.30pm

Tues - 9.30am - 4.00pm

Wed - 9.30am - 4.00pm

Thur - 9.30am - 4.00pm

Fri - 9.30am - 4.00pm

The Kapers is a free electronic weekly newsletter and runs for 50 weeks.

Submission deadline for advertising is Monday 1.00pm

Email submissions to: [kapers@kalannie.com.au](mailto:kapers@kalannie.com.au)

Become an email subscriber and receive a free online copy visit our website to sign up [kalannie.com.au](http://kalannie.com.au)

The Kapers is supported by the



Department of  
Primary Industries and  
Regional Development

Welcome to  
KALANNIE

## *Kapers Editions*

Free online at

[www.kalannie.com.au](http://www.kalannie.com.au)

\$2 for a printed copy or become  
a yearly print subscriber

Email us at

[kapers@kalannie.com.au](mailto:kapers@kalannie.com.au) for all  
your Kapers requirements

## Advertising

Full Page \$30

Half Page \$25

Quarter Page \$20

Yearly advertising  
available

\*Prices subject to change\*



Kalannie

Community Resource Centre

*Your local connection*

COMMUNITY BANK MUKINBUDIN  
IS COMING TO...

*Kalannie*

Community Bank  
Mukinbudin

**B** Bendigo Bank

***Morning tea  
provided!***

**DOES YOUR CLUB  
NEED FUNDING OR  
HELP WITH  
REVIEWING YOUR  
CLUB'S BANKING?**

Come and see Jess and Evie at  
the Kalannie CRC, whether you  
need to change signatories,  
discuss sponsorship or  
just want to drop by to say hi!

**THURSDAY,  
11<sup>TH</sup> JUNE**  
Kalannie CRC  
10:00am



Kalannie  
Community Resource Centre  
*Your local connection*

# Wheatbelt Community Calendar

May

Sun	Mon	Tue	Wed	Thur	Fri	Sat
31					1	2 Beacon v Kalannie
3	4	5	6 Cadoux Mothers Day Markets	7	8 CWA Meeting 10.30am 	9 Kalannie v Muckinbudin
10 	11	12	13	14	15	16 Kalannie BYE
17 National Volunteers Week 	18	19	20 World Bee Day 	21	22	23 Bencubbin v Kalannie
24	25	26 Shire Council Meeting @ Dalwallinu Shire 5.00pm	27	28	29	30 CWNA Country Week BYE

**Disclaimer:** The views expressed in articles published in this newsletter are not necessarily the views of the Kalannie CRC or any volunteer who may work to produce this publication. The Editor has the right to withhold, edit or abbreviate any items as considered necessary. No responsibility is accepted for the accuracy of the information presented. No liability is accepted. Thank you

# Wheatbelt Community Calendar

June

Sun	Mon	Tue	Wed	Thur	Fri	Sat
	1 WA Day Public Holiday 	2	3	4	5	6 Kalannie v Koorda
7	8	9	10	11 Bendigo Bank @ CRC 10am  Kalannie Bowling Club AGM 6.00pm @ Sports Club	12 CWA Meeting 10.30am 	13 Kalannie v Beacon  Ladies Day & Nineties Night
14	15	16 Liebe Womens Field Day	17	18 eID Workshop @ CRC 10am	19	20 CWLHA Country Week BYE
21	22	23 Shire Council Meeting @ Dalwallinu Shire 5.00pm	24	25	26	27 Mukinbudin v Kalannie
28	29 SOCK Week 	30				

kapers@kalannie.com.au  
Phone: 9666 2194


Submissions to be received prior to  
1pm Mondays

\$2.00 PRINTED  
online version Free to subscribers  
Click [HERE](#) to Subscribe

# Shire Notices

*Place of wheat and wattle...*

## 2025-2026 Recycle Calendar Dates

 <b>Shire of Dalwallinu</b> Recycle Calendar 2025-2026 						
July 2025						
S	M	T	W	T	F	S
		1	2	3	4	5
6	7	8	9	10	11	12
13	14	15	16	17	18	19
20	21	22	23	24	25	26
27	28	29	30	31		
August 2025						
S	M	T	W	T	F	S
					1	2
3	4	5	6	7	8	9
10	11	12	13	14	15	16
17	18	19	20	21	22	23
24	25	26	27	28	29	30
31						
September 2025						
S	M	T	W	T	F	S
	1	2	3	4	5	6
7	8	9	10	11	12	13
14	15	16	17	18	19	20
21	22	23	24	25	26	27
28	29	30				
October 2025						
S	M	T	W	T	F	S
			1	2	3	4
5	6	7	8	9	10	11
12	13	14	15	16	17	18
19	20	21	22	23	24	25
26	27	28	29	30	31	
November 2025						
S	M	T	W	T	F	S
						1
2	3	4	5	6	7	8
9	10	11	12	13	14	15
16	17	18	19	20	21	22
23	24	25	26	27	28	29
30						
December 2025						
S	M	T	W	T	F	S
	1	2	3	4	5	6
7	8	9	10	11	12	13
14	15	16	17	18	19	20
21	22	23	24	25	26	27
28	29	30	31			
January 2026						
S	M	T	W	T	F	S
				1	2	3
4	5	6	7	8	9	10
11	12	13	14	15	16	17
18	19	20	21	22	23	24
25	26	27	28	29	30	31
February 2026						
S	M	T	W	T	F	S
1	2	3	4	5	6	7
8	9	10	11	12	13	14
15	16	17	18	19	20	21
22	23	24	25	26	27	28
March 2026						
S	M	T	W	T	F	S
1	2	3	4	5	6	7
8	9	10	11	12	13	14
15	16	17	18	19	20	21
22	23	24	25	26	27	28
29	30	31				
April 2026						
S	M	T	W	T	F	S
			1	2	3	4
5	6	7	8	9	10	11
12	13	14	15	16	17	18
19	20	21	22	23	24	25
26	27	28	29	30		
May 2026						
S	M	T	W	T	F	S
					1	2
3	4	5	6	7	8	9
10	11	12	13	14	15	16
17	18	19	20	21	22	23
24	25	26	27	28	29	30
31						
June 2026						
S	M	T	W	T	F	S
	1	2	3	4	5	6
7	8	9	10	11	12	13
14	15	16	17	18	19	20
21	22	23	24	25	26	27
28	29	30				

### Recycle Days

-  Kalannie
-  Dalwallinu & Pithara
-  Christmas Day



### WHAT CAN GO INTO YOUR RECYCLE BIN

- Glass - All glass and ceramics, whole and broken
- Plastic - All plastic containers and plastic wraps (empty with lids off)
- Paper - All paper, junk mail and glossy magazines
- Cardboard - All cardboard products
- Aluminium & Steel - All metals, steel & aluminium excluding aerosol cans
- Liquid Paperboard - Milk, juice and laundry detergent cartons.

There will be changes to the service over the Christmas Period, will advise closer to date.



13th June

# Ladies Day

Kalannie Home Game!



Join us in celebrating and bringing together all our supporting and sporting women!

Ticket prices includes nibbles and drinks throughout the footy after hockey has finished.

\$25 per person



RSVP:

Sally (0424 906 989) or Ashlee (0498 778 887) by 5<sup>th</sup> June

Payment to Kalannie Hockey Club

BSB: 066 - 519

Account Number: 1013 4138



All Welcome!



# NINETIES + NAUGHTIES NIGHT



**90S & 00S  
DRESS UP NIGHT**



13TH JUNE  
KALANNIE CLUB



Come dressed in your best 90s or 2000s fit for peak nostalgia & like your myspace profile depends on it!

---

**DJ STEADS  
PLAYING!**



# KALANNIE BOWLING CLUB

The 2025/2026 Annual General Meeting for the Kalannie Bowling Club will be held on

11th June 2026 at 6.00PM

At the Kalannie Sports Club

Please advise the President Larry or Secretary Julie  
Of any items for the Agenda.

## FIRST AID KITS

### ST JOHN DALWALLINU & KALANNIE

We have a range of first aid kits instock, can't find what you are looking for. We can order it in

Pop into the subcentre Wednesdays and Thursdays 9 till 1

We have kits for  
Personal  
Baby and toddler  
Pets  
Caravan  
Boating  
Workplace  
Bites and stings  
Motoring  
Snake bite

**GET IN TOUCH**

Phone- 08 9661 2601

Email- [Dalwallinu.subcentre@stjohnrwa.com.au](mailto:Dalwallinu.subcentre@stjohnrwa.com.au)





# Women's Field Day

TUESDAY 16<sup>TH</sup> JUNE 2026

DALWALLINU RECREATION CENTRE

TICKETS AVAILABLE NOW!

Members: \$50\*

Non-members/Industry: \$90

\*First 2 tickets for Liebe Farm Business members are complimentary - see member email for details



SCAN QR CODE FOR MORE INFO AND TO BOOK

Topic's include:

- **Autonomous and Drone Technology**
- **Young Grower Insights**
- **HR Systems and Managing Diverse Teams**
- **Farm Insurance: Quotes, Claims and Covers**
- **Indian Lentil Market**
- **Plus more!**



**Di Darmody | Keynote**

Stories from Behind the Microphone



**Eric Nankivell | FARMANCO**

Smart Decisions in Tough Times: Strategy, Risk and Successful Systems

Event Partner

Diamond Partners



08 9661 1907



[www.liebegroup.org.au/events](http://www.liebegroup.org.au/events)





## NEW STONE MEMORIAL WALL INSTALLATION

Last week the new stone memorial wall was installed. It is for those who want to display name plaques alongside our QR code memorials. Thanks to Brenton from Oxter Services for installing this for the community.

If you would like to organise having a plaque added to the wall you will need to send a form through to Oxter Services. Which you can get from the CRC.

Email us [kalanniecrc@kalannie.com.au](mailto:kalanniecrc@kalannie.com.au) or phone 9666 2194 for more information.



## CELEBRATE WA

Enjoy your long weekend !!

The CRC will be closed on Monday  
1st June for WA Day

# EXPRESSIONS OF INTEREST

**Heavy Rigid (HR)**

**Truck Training and Licensing**

**Date: 20<sup>th</sup> July**

places limited

- up to 9 hrs
- over 2-3 days
- one-on-one training

Register your interest with Kalannie CRC:  
[kalanniecrc@kalannie.com.au](mailto:kalanniecrc@kalannie.com.au)  
9666 2194





## *~ Specialising in Transport ~*



*Extendable and Deck Widening Low Loader  
Grain Tippers, Side Tippers  
Fertilizer, Lime, Gypsum  
Wool, Hay and General Freight  
Water Carting  
Spraying*



**Chris - 0427 088 173 / Steve - 0429 662 033**





Department of  
Primary Industries and  
Regional Development

Protect  
Grow  
Innovate



Department of  
Primary Industries and  
Regional Development

Protect  
Grow  
Innovate

## Sheep and Goat Electronic Identification (eID) Workshop

*Are you ready for electronic identification of sheep and goats?*

If you have questions about transitioning to eID, join us for a workshop at Kalannie CRC. Our team will be available to help you understand what the transition to eID means for you and how to use the National Livestock Identification System (NLIS) when uploading eID tags.

**eID for sheep and goats becomes a legal requirement from 1st July 2026.**

### At this workshop you will:

- Understand eID tagging requirements and timelines.
- Learn your responsibilities for recording livestock movements.
- See a demonstration of a scanning wand.
- Receive guidance on uploading movements to the National Livestock Identification System (NLIS).
- Q&A Session / Support after the presentation.

**Date:** 18-06-2026

**Time:** 10:00am to 12:00pm followed by Q&A Session

**Location:** Kalannie CRC

67 Roche St, Kalannie WA 6468

**RSVP:** Humanitix by 15<sup>th</sup> of June

Morning Tea and light refreshments provided



Kalannie

Community Resource Centre

*Your local connection*

phone: 9666 2194

or email:

[kalanniecrc@kalannie.com.au](mailto:kalanniecrc@kalannie.com.au)

# protective behaviours resource book collection

Following on from the Protective Behaviours Workshop for parents, Kalannie CRC now has a small collection of child-safety themed children's books for loan.

These are ideal to use alongside the workbook provided by CFSS for Parents and Carers when teaching Protective Behaviours to children.



Please get in touch with Kalannie  
CRC to make arrangements:

9666 2194

or

[kalanniecrc@kalannie.com.au](mailto:kalanniecrc@kalannie.com.au)



# ALL IN

FOR RECONCILIATION

#NRW2026

RECONCILIATION.ORG.AU



25 YEARS OF RECONCILIATION AUSTRALIA



## All In for National Reconciliation Week 2026

The theme for National Reconciliation Week 2026 is All In, a call for all Australians to commit wholeheartedly to reconciliation every single day.

All In makes clear that reconciliation is not a spectator sport and that all of us must step away from the sidelines and take action to make change.

The theme also reminds us that reconciliation and advancing Aboriginal and Torres Strait Islander peoples' rights isn't a passive activity, and it is not solely the responsibility of First Nations people, who have carried the weight of championing, explaining and acting for far too long.

Reconciliation will not happen by itself, and it will not happen without all of us.

The #NRW2026 campaign was created in collaboration with Carbon Creative, a First Nations-owned and operated marketing and creative agency.

The artwork for this campaign is by renowned Gumbaynggirr/Bundjalung artist Otis Hope Carey, who applied his distinctive style to create a colourful and optimistic visual representation of people from all walks of life being 'all in' to make change.

Meaningful May 2026

MONDAY



TUESDAY



WEDNESDAY



THURSDAY



FRIDAY

SATURDAY

SUNDAY

- 1 Do something kind for someone you really care about
- 2 Focus on what you can do rather than what you can't do
- 3 Take a step towards an important goal, however small
- 4 Send your friend a photo from a time you enjoyed together
- 5 Let someone know how much they mean to you and why
- 6 Look for people doing good and reasons to be cheerful
- 7 Make a list of what matters most to you and why
- 8 Set yourself a kindness mission to help others today
- 9 What values are important to you? Find ways to use them today
- 10 Be grateful for the little things, even in difficult times
- 11 Look around for things that bring you a sense of awe and wonder
- 12 Listen to a favorite piece of music and remember what it means to you
- 13 Find out about the values or traditions of another culture
- 14 Get outside and notice the beauty in nature
- 15 Do something to contribute to your local community
- 16 Show your gratitude to people who are helping to make things better
- 17 Find a way to make what you do today meaningful
- 18 Send a handwritten note to someone you care about
- 19 Reflect on what makes you feel valued and purposeful
- 20 Share photos of 3 things you find meaningful or memorable
- 21 Look up at the sky. Remember we are all part of something bigger
- 22 Find a way to help a project or charity you care about
- 23 Recall three things you've done that you are proud of
- 24 Make choices that have a positive impact for others today
- 25 Ask someone else what matters most to them and why
- 26 Remember an event in your life that was really meaningful
- 27 Focus on how your actions make a difference for others
- 28 Do something special and revisit it in your memory tonight
- 29 Today do something to care for the natural world
- 30 Share a quote you find inspiring to give others a boost
- 31 Find three reasons to be hopeful about the future

ACTION FOR HAPPINESS

Happier - Kinder - Together



# Consumer Watch



Department of Local Government,  
Industry Regulation and Safety



## Regional Column

**Consumer Protection** 140 William Street Perth Western Australia 6000  
Email: [cpmedia@lgirs.wa.gov.au](mailto:cpmedia@lgirs.wa.gov.au) | [www.consumerprotection.wa.gov.au](http://www.consumerprotection.wa.gov.au) | [www.wa.gov.au](http://www.wa.gov.au)

21 May 2026

### Understanding the risks of buying repairable write-offs

Everyone loves a bargain – especially when it's well below market value. But when that bargain is a repairable write-off, it's important to understand the rules and risks associated with these vehicles.

It is legal for repairable write-offs to be re-registered and sold in Western Australia, provided these vehicles have passed a safety inspection. This is different to statutory write-offs which are severely damaged vehicles that can only be used for spare parts.

Motor vehicle dealers in Western Australia must disclose to prospective buyers whether a vehicle is recorded as a repairable write-off. They need to declare this using a specific form - called a Form 4 - which should be displayed in a position where it is clearly visible through the windscreen of every second-hand car they're selling or in the case of a motorcycle clearly visible to a person standing near the vehicle.

It's important to note that the rules for repairable write-offs do not apply to private car sales. There's a greater risk for buyers involved in private sales, compared to buying from a licenced dealer.

Repairable write-offs can be tempting – a decent car for thousands less than usual - but as with most things that look too good to be true, it's good to pause and take a closer look at what you're buying.

It's worth keeping in mind that insurance companies know when a vehicle has been deemed a repairable write-off because the VIN is listed on a register so you may struggle to get full insurance, or you may discover that the vehicle has a lower market value.

Every used car buyer has a right to know that the vehicle they have chosen is safe, reliable, and fit for purpose. Under the Australian Consumer Law (ACL), licensed dealers have several obligations including, making sure the car is of acceptable quality and will last a reasonable time. They also must not mislead you about the vehicle you're buying.

However, aside from those obligations, dealers generally do not have to give consumers details about the vehicle's service history so even though a damaged vehicle can be repaired, it may mean there could be other unknown issues.

We encourage consumers to do a \$2 Personal Properties Securities Register (PPSR) search online which will reveal if a vehicle is recorded as a repairable write-off, has been stolen and is free of outstanding debts. You can do this check at [www.ppsr.gov.au](http://www.ppsr.gov.au) or call 1300 007 777.

To further protect against buying a lemon, Consumer Protection has an easy-to-follow used car buyer's checklist online – [www.consumerprotection.wa.gov.au/publications/buying-car-buyers-checklist](http://www.consumerprotection.wa.gov.au/publications/buying-car-buyers-checklist)

Complaints about dealers suspected of not following the rules on repairable write-offs can be lodged on the Consumer Protection website - [www.consumerprotection.wa.gov.au](http://www.consumerprotection.wa.gov.au) and enquiries can be made by calling 1300 30 40 54 or by emailing [consumer@lgirs.wa.gov.au](mailto:consumer@lgirs.wa.gov.au)

# Grants

## Assistance for sheep producers: Round 2 grants now open

If your business has been impacted by the phase out of live sheep exports by sea, you may be eligible to apply for funding to help prepare for the end of the trade.

As part of the Australian Government's \$139.8 million transition assistance package, grants of **up to \$75,000** (GST exclusive) across both rounds are now available.

This program is designed to assist producers develop business plans and encourage the adoption of alternative farming systems and practices in preparation for the end of the trade.

Applicants must have actively participated in the live sheep export by sea trade since **1 July 2020** and provide a **1:1** matching cash co contribution.

Applications are open until **15 July 2026**.

To find out more and to apply visit [agriculture.gov.au/2028](http://agriculture.gov.au/2028).



## Assistance for livestock transport industry: Round 2 grants now open

If your business has been impacted by the phase out of live sheep exports by sea, you may be eligible to apply for a grant to help prepare before the trade ends.

As part of the Australian Government's \$139.8 million transition assistance package, grants of **up to \$40,000** (GST exclusive) across both rounds, per applicant are now available to assist eligible livestock transport businesses.

The Livestock Transport Industry Transition program is designed to assist livestock transport operators transition to other transport-related activities, which may require further investment, to prepare for the end of the live sheep exports by sea trade.

Applicants must have actively participated in the live sheep export by sea trade since **1 July 2020** and provide a **1:1** matching cash co contribution.

If your business has been involved in transporting sheep or essential export-related goods, such as feed, bedding, water systems, veterinary supplies, or handling equipment, specifically for the live export trade, you may be eligible. Applications are open until **13 July 2026**.

Read more and apply: [agriculture.gov.au/2028](http://agriculture.gov.au/2028)



# Media Release



**MELISSA PRICE**  
FEDERAL MEMBER FOR **DURACK**



## Labor's attack on private health insurance for over 65s

The Hon. Melissa Price MP, Member for Durack is asking all those aged 55 or over to complete her survey asking them if they could afford to pay an extra \$640 per year for private health insurance.

In last week's budget Labor announced plans to cut the private health rebate for Australians aged 65 or over.

Over 2.5 million older Australians could soon be forced to pay up to \$640 more every year for private health insurance in the middle of a cost-of-living crisis.

Older Australians are already under pressure with many dealing with rising everyday costs from groceries to energy bills and now face the prospect of higher healthcare expenses as well.

If more people are pushed out of private health insurance, it will place even greater pressure on an already stretched public health system.

In regional Western Australia, private health insurance is not a luxury it is often a necessity. It is truly shameful that in our current economic situation, senior Australians are now being forced to pay more for important and in some instances, essential, health care cover.

The health insurance rebate for older people has been cut from between 28% and 32% to the lower rebate of 24% received by younger Australians. As a result, it is estimated that private health insurance premiums for seniors with higher levels of cover could increase by 21%.

Labor have ignored the fact that older Australians use their health insurance more frequently than younger Australians.

Older regional Western Australians should not be made to pay for policy failures.

To take the survey head to,

<https://www.melissapricemp.com.au/laborshealthchangescostingyoumore>

Your response will help strengthen the case to hold Labor accountable and push back on these changes.

### Geraldton Office

2B/209 Foreshore Drive, Geraldton WA 6530 08 9964 2195

### Broome Office

4/34 Frederick Street, Broome WA 6725 08 9192 7216

[melissapricemp.com.au](https://www.melissapricemp.com.au) [MelissaPriceDurack](https://www.facebook.com/MelissaPriceDurack) [melissa.price.mp@aph.gov.au](mailto:melissa.price.mp@aph.gov.au)

Get in touch  
with us over  
seeding



**Boekeman**  
**Machinery**

Est 1968

## **DALWALLINU BRANCH**

**(08) 9661 1002**

### ***Hello, I'm Paul***



We're pleased to introduce Paul Tanner, who joined our Dalwallinu branch in January.

Paul brings years of extensive service experience to the workshop, and his technical expertise has already proven to be a fantastic asset.

Paul has settled in seamlessly, fitting into the team culture from day one. We're wrapped to have him on board.

After Hours **Parts** Mobile: **0427 084 216**

After Hours **Service** Mobile: **0427 084 214**

After Hours **Sales**: **0427 084 210**

---

**Precision Farming** Support Line – **0488 844 690**

---

[WWW.BOEKEMANS.COM.AU](http://WWW.BOEKEMANS.COM.AU)

---

Branch Manager Johan Calitz – 0427 084 210

Service Manager Paul Tanner – 0427 084 214

Parts Manager Kirsty Booth – 0427 084 216

Sales Consultant Dominic Sheehy – 0459 214 350

Sales Consultant Matthew Joyner – 0437 611 725

*Wishing you all  
the best for  
seeding 2026!*



### **SEEDING OPENING HOURS**

Extended hours apply

20 April - 13 June

**Contact us for details**

SATURDAY MORNINGS

8:00am - 12:00pm



*Hazlett*

# CORNER STORE

Suppling Locals fresh produce, dairy and meat daily  
Saving locals the cost of travel

Fresh fruit and veg from Canning Vale Market

Fresh meat and poultry from Market City meats

Fresh Bread from Mias Bakery

Fresh milk from Masters milk

Fresh eggs from Katie Joys Gin Gin

Fresh smallgoods from Dorsonga

Fresh Cheese from Cape Naturaliste

All WA owned companies based in WA

Come in and see the crew and ask about further  
savings on grocery purchases



Cafe, Bottle Shop, Post Office

Manger : Gabrielle Severin

## Opening Hours

Monday to Friday 6am - 5.30pm

Saturday 7am - 12pm

Sunday 9am - 12pm

Phone: 9666 2040





17 Dodd Street, Kalannie WA 6468

## Contact

MARK: 0407 640 614

SHOP: 9666 2179

admin@kalannieagquip.com.au



Farming & Livestock



General Hardware



Home & Garden



Automotive & Hydraulics

Industrial & Household Gas



## Shop Hours

MON - FRI: 7.30 AM - 5.00 PM

SAT: 7.30 AM - 12.00 PM

Proudly partnered with

**Nutrien**



# Kochii Eucalyptus Oil has rebranded to become Fasera.

## We've changed our name, not our vision.

At the same time we've been producing incomparable Australian eucalyptus oils, we've also been building our position as a global leader in sustainable agricultural carbon sequestration.

Now, operating as Fasera, we produce carbon credits, biochar, wood vinegar and eucalyptus oil via our carefully selected and managed estates of oil mallee trees on land owned by local farmers. Whilst we are changing and expanding, our roots remain firmly in Kalannie, the wheatbelt and Western Australia.



To find out more about our offerings and to purchase Eucalyptus Oil products go to [fasera.com](https://fasera.com)



**fasera**



# Holiday closures

This Services Australia Access Point will be closed on:  
Monday 1 June 2026

Your reporting and payment dates may change.  
We may even pay you early.

To find out when you need to report or will get paid, go to  
**[servicesaustralia.gov.au/holidays](https://servicesaustralia.gov.au/holidays)**

You can still use your myGov account, Express Plus mobile apps  
and phone self service during this time.

## Information in other languages

For Centrelink payments and services, you can call **131 202** to speak  
with someone in your language.

For help with Medicare, you can call **132 011** and let us know if you  
need an interpreter. We'll arrange one for free.

For help with Child Support, you can call **131 272** and let us know if you  
need an interpreter. We'll arrange one for free.

# Education and Training

Regional, Rural and Remote Home Care Workforce Support Program

## Wanting to grow your career in care and support your community?



**We're here to help local people step into local aged care roles.  
We provide simple, supportive guidance to connect you with  
opportunities in your community.**



**Support you with your resume,  
interview preparation and  
building confidence**



**Assist you with training  
pathways and placement**



**Link you with local  
aged care opportunities**



**Guide your new role with  
mentoring and check-ins**



[workforce@skillshubs.com.au](mailto:workforce@skillshubs.com.au)



1800 319 762



[skillshubs.com.au](http://skillshubs.com.au)



Funded by



Australian Government  
Department of Health, Disability and Aging

# Regional, Rural and Remote Home Care Workforce Support Program



**Funded by the Commonwealth Government, this Program aims to:**



### **Attract**

Raise the profile of aged care workforce opportunities in your local region to unlock existing potential



### **Train**

Match candidates to accessible training pathways or identify training gaps and co-design solutions



### **Retain**

Work with employers to strengthen organisational capacity and processes to increase staff retention



### **Support**

Engage the holistic community discussion to recognise and grow the key role local aged care workforces play in strong, sustainable local futures

**The Regional, Rural and Remote Home Care Workforce Support Program** is being proudly delivered by **Skills Generation**, a Queensland-based Registered Training Organisation, and **Skills Hubs**, a workforce development not-for-profit, in partnership with the **Australian Catholic University** across eligible regions in Queensland, New South Wales, South Australia and Western Australia. (See map overleaf).

Ageing Australia is delivering in Victoria and Tasmania, and CREST in the Northern Territory.

This is a three year program, ending in mid-2028.



# Eligible Regions (by Statistical Area Three)

## Queensland

- Outback – North
- Outback – South
- Charters Towers – Ayr – Ingham
- Central Highlands
- Biloela
- Burnett

## New South Wales

- Broken Hill and Far West
- Clarence Valley
- Kempsey–Nambucca
- Taree – Gloucester
- Great Lakes
- Southern Highlands

## South Australia

- Outback – North and East
- Eyre Peninsula and South West
- Lower North
- Yorke Peninsula
- Murray and Mallee
- Limestone Coast

## Western Australia

- WheatBelt
- Mid West
- Kimberley
- Great Southern
- Esperance and surrounds
- Donnybrook/Balingup
- Bridgetown
- Boyup Brook
- Manjimup
- Pemberton



## Are you ...

A local Aged Care Provider looking for staff or training?

Interested in training and/or working in a support role?

A local training provider in the care and support sector?

A student looking to enter the care sector?

Someone who cares about the long-term future of your community?

A local community organisation?

A disability service organisation?



## We would love to hear from you:



Regional, Rural and Remote Home Care Workforce Support Program

1800 319 762  
enquiries@skillshubs.com.au



# We're with you through it all

At Elders Insurance, we're with you no matter where life takes you. With dedicated agents who understand your needs, we'll help you find the right cover.



Business



Farm



Personal



Commercial motor & fleet

Contact your local agents for a personalised quote today.

Craig Guthrie 96710901 | Joanne Di Loreto 96710903

Office number 96710900  Elders Insurance Wongan Hills & Dalwallinu



GUSNJO Pty Ltd ABN 19604216926 trading as Elders Insurance Wongan Hills & Dalwallinu AR No. 1233076 is an Authorised Representative of Elders Insurance (Underwriting Agency) Pty Limited (ABN 56 138 879 026, AFSL 340965) (EIUA). EIUA, acting under its own AFSL, is authorised to distribute Elders Insurance products on behalf of QBE Insurance (Australia) Limited (ABN 78 003 191 035, AFSL 239545), the product issuer. Visit [www.eldersinsurance.com.au](http://www.eldersinsurance.com.au) to consider the relevant Product Disclosure Statement and any applicable Target Market Determination to decide if the product is right for you.

Insurance

## WOOL BUYER

- All Merino & Crossbred wools
- Top prices paid • We come to you
- Same day settlement available

Statewide service



**Mike Fairclough**  
FAIRCLOUGH WOOL  
**0429 635 999**

# Community Sport Notices



## KALANNIE FC FIXTURES

18 APR	OPENING ROUND/DELTA AG ROUND - KALANNIE VS BENCUBBIN (AWAY KOORDA)	
25 APR	ANZAC ROUND - KOORDA VS KALANNIE	
2 MAY	BEACON VS KALANNIE	
9 MAY	KALANNIE VS MUKINBUDIN	
23 MAY	BENCUBBIN VS KALANNIE	
6 JUN	10 YEAR REUNION 2016 PREMIERSHIP KALANNIE VS KOORDA	
13 JUN	THINK MENTAL - KALANNIE VS BEACON	
27 JUN	MUKINBUDIN VS KALANNIE	
18 JULY	KALANNIE VS BENCUBBIN	
25 JULY	BENDIGO ROUND - BEACON VS KALANNIE	
1ST AUG	SPONSORS DAY - KALANNIE VS MUKINBUDIN	
8 AUG	CLUB WIND UP - KOORDA VS KALANNIE	
22 AUG	LEAGUE WIND UP - SEMI FINALS - KALANNIE	
29 AUG	PRELIM FINAL - KOORDA	
5 SEPT	GRAND FINAL - BENCUBBIN	
HOME	AWAY	

## 2026 SPONSORS



## CENTRAL WHEATBELT 2026 WINTER SPORTS FIXTURES



### ROUND ONE

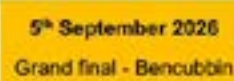
<p>18th April 2026 ALL SPORTS TO BE PLAYED IN KOORDA</p> <p>Mukinbudin v Beacon Kalannie v Bencubbin Koorda BYE</p> <p> DELTA AG ROUND</p>	<p>25th April 2026</p> <p>KoordA v Kalannie Bencubbin v Beacon Mukinbudin BYE</p> <p>ANZAC ROUND</p>	<p>2nd May 2026</p> <p>Beacon v Kalannie Mukinbudin v Koorda Bencubbin BYE</p>	<p>9th May 2026</p> <p>KoordA v Bencubbin Kalannie v Mukinbudin Beacon BYE</p>	<p>16th May 2026</p> <p>Beacon v Koorda Bencubbin v Mukinbudin Kalannie BYE</p> <p>BELT UP ROUND</p>
--	--	--	--	--

### ROUND TWO

<p>23rd May 2026</p> <p>Mukinbudin v Beacon Bencubbin v Kalannie Koorda BYE</p> <p> DELTA AG ROUND</p>	<p>30th May 2026</p> <p>CWNA Country Week BYE</p>	<p>6th June 2026</p> <p>Kalannie v Koorda Beacon v Bencubbin Mukinbudin BYE</p>	<p>13th June 2026</p> <p>Kalannie v Beacon Koorda v Mukinbudin Bencubbin BYE</p> <p>THINK MENTAL</p>	<p>20th June 2026</p> <p>CWLHA Country Week BYE</p>	<p>27th June 2026</p> <p>Bencubbin v Koorda Mukinbudin v Kalannie Beacon BYE</p>	<p>4th July 2026</p> <p>KoordA v Beacon Bencubbin v Mukinbudin Kalannie BYE</p>
--	---	---	--	---	--	---

### ROUND THREE

<p>11th July 2026</p> <p>CWFL Country Week BYE</p>	<p>18th July 2026</p> <p>Beacon v Mukinbudin Kalannie v Bencubbin Koorda BYE</p>	<p>25th July 2026</p> <p>Beacon v Kalannie Mukinbudin v Koorda Bencubbin BYE</p> <p> BENDIGO ROUND</p>	<p>1st August 2026</p> <p>KoordA v Bencubbin Kalannie v Mukinbudin Beacon BYE</p>	<p>8th August 2026</p> <p>KoordA v Kalannie Bencubbin v Beacon Mukinbudin BYE</p>	<p>16th August 2025</p> <p>Beacon v Koorda Mukinbudin v Bencubbin Kalannie BYE</p>
--	--	--	---	---	--



# Community Sport Notices



## Top Bencubbin Edges Kalannie in Emotional Top-of-Table Clash



In a top-of-the-table clash at Kalannie, the undefeated Bencubbin Doggies came away with the points against a determined Kalannie side that wore black armbands in memory of Ted Hunter.

Pre-game the Doggies vowed to play with Ted's spirit, and the Doggies matched that intensity from the first bounce. Returning to the line-up were Oldham, Sheard and Harms, each playing their first game of the season. The opening quarter was a fierce midfield battle — Sanderson, Stedman, Spencer and ruckman Doyle competing hard — the scoreboard stayed tight, with Bencubbin holding a narrow two-point edge.

The second quarter produced plenty of forward entries, but goals were hard to come by as both defences applied enormous pressure. Kalannie's backline stood up strongly under sustained attack, shifting the ball through the middle to create opportunities, but the half-time siren found the home side nine points adrift.

Bencubbin made tactical adjustments at half-time, moving Matera into the forward line. His class in front of goal opened the game up and allowed the Demons to take control. Up forward for Kalannie, Foster, King, Spinner and Harms continued to take beautiful marks and kept applying scoreboard pressure, while Cail grew in confidence, taking strong grabs and helping drive the ball forward. Down back Murray kept his high-level opponent Brooks to just one goal and doing what he does best, intercepting that came his way and switch the play. Reynolds continues to play well and fought hard in contests.

Injuries disrupted rotations — Barrass, Spencer and McCreery all went down during the contest — and the depth and form of the top side told as the match progressed. Ultimately Bencubbin won the day 13.9 – 87 to Kalannie 7.13 – 55. The score board no a real reflection on the quality of football played by Kalannie, the last 10 minutes Bencubbin were able to score quick goals in succession.

With plenty of footy left this season Kalannie will regroup and return to their home deck on Saturday 6 June to face Koorda. That game will also double as the club's 10-year reunion, celebrating the 2016 premiership.

**Best on Ground — Sponsored by Kalannie Agquip: Zac Sanderson**

**2nd Best on Ground — Sponsored by Kalannie Contractors: Cam Stedman**

**3rd Best on Ground — Sponsored by WA Fuels: Matt Murray**

**Coaches Award — Sponsored by Bywaters Transport: Kyle Harms**

**Players' Player — Sponsored by RnR Auto: Kaden Reynolds**

**Thank you for all our 2026 Sponsors!**

# Community Sport Notices



## CENTRAL WHEATBELT WINTER SPORTS RESULTS

**ROUND SIX— Saturday, 23rd May 2026**



**Mukinbudin: 6.3, 12.4, 14.9, 19.14 (128) def Beacon: 1.3, 3.6, 7.9, 8.9 (57)**

**GOALS:**

**Mukinbudin:** E. Brooks 5, P. Ambrose 4, S. Irving 3, J. Mcintosh 2, D. Farmer 2, M. Williams 1, T. O'Brien 1, M. Michaud 1

**Beacon:** W. Munns 3, A. Munns 1, B. Dunne 1, L. Blurton 1, M. Dellar 1, C. Farmer 1

**BEST:**

**Mukinbudin:** S. Irving, C. Williams, E. Brooks, Z. Alvaro, D. Farmer, T. O'Brien

**Beacon:** L. Blurton, M. Dellar, D. Walsh, B. Poole, C. Junk, W. Munns

**Bencubbin: 3.2, 5.7, 9.9, 13.9 (87) def Kalannie: 3.0, 4.4, 6.9, 7.13 (55)**

**GOALS:**

**Bencubbin:** Br. Matera 5, D. Mcfarlane 5, J. Brooks 1, C. O'Connell 1, M. Holden 1

**Kalannie:** J. Spinner-mainstone 2, R. Jefferys 1, C. Stedman 1, L. Spencer 1, C. Foster 1, B. King 1

**BEST:**

**Bencubbin:** M. Holden, D. Campbell, C. Morgani, Br. Matera, D. Mcfarlane, C. White

**Kalannie:** Z. Sanderson, C. Stedman, M. Murray, L. Spencer, K. Reynolds, M. Doyle

TEAM	P	PTS	%	W	L	D	BYE
Bencubbin Football Club	5	<b>20</b>	214.86	5	0	0	1
Kalannie Football Club	5	<b>12</b>	103.65	3	2	0	1
Mukinbudin Football Club	5	<b>8</b>	108.4	2	3	0	1
Koorda Football Club	4	<b>8</b>	92.7	2	2	0	2
Beacon Football Club	5	<b>0</b>	49.17	0	5	0	1



# Community Sport Notices

## Central Wheatbelt Netball Association



### Mukinbudin (54) def Beacon (36)

**Mukinbudin: Players' Choice:** Chloe King

**Beacon: Best Player:** Tamara Halit

**Coach's Award:** Lily Haeusler

**Coach's Award:** Kate Munns

### Bencubbin (34) def by Kalannie (35)

**Bencubbin: Players' Choice:** Sally Putt

**Kalannie: Players' Choice:** Meg Couper

**Coach's Award:** Kayla Sanders

**Coach's Award:** Gabby Severin

TEAM	P	PTS	%	W	L	D	BYE
Koorda Netball Club	4	<b>16</b>	187.13	4	0	0	2
Kalannie Netball Club	5	<b>16</b>	147.52	4	1	0	1
Mukinbudin Netball Club	5	<b>12</b>	131.79	3	2	0	1
Bencubbin Netball Club	5	<b>4</b>	98.79	1	4	0	1
Beacon Netball Club	5	<b>0</b>	30.43	0	5	0	1

## Central Wheatbelt Ladies Hockey Association



### Mukinbudin (5) def Beacon (1)

**GOALS:**

**Mukinbudin:** D. Cronje 3, H. Paterson 2

**Beacon:** S. Griffiths 1

**AWARDS:**

**Mukinbudin: Players' Choice:** Isabel Vernon

**Beacon: Best Player:** Kerry Junk

**Coach's Award:** Carrie Cooper-Lepre

**Coach's Award:** Pei-Ching Wu

### Bencubbin (0) drew Kalannie (0)

**GOALS:**

**Bencubbin:** NIL

**Kalannie:** NIL

**AWARDS:**

**Bencubbin: Player of the Day:** Daneeka Yates

**Coach's Award:** Kasey Pringle

**Defender of the Day:** Georgina McKay

**Kalannie: Players' Choice:** Helen Sutton

**Coach's Award:** Ashlee Gartrell

Team	Wins	Draws	Losses	BYEs	For	Against	Diff.	Points
1. Mukinbudin	4	1	0	1	26	4	22	9
2. Koorda	2	2	0	2	13	3	10	6
3. Beacon	1	2	2	1	9	10	-1	4
4. Bencubbin	1	2	2	1	5	16	-11	4
5. Kalannie	0	1	4	1	1	21	-20	1

# Countryside Memorials



- Cast Stone
- Granite
- Marble
- Plaques

Added Inscriptions  
All Repairs and Restorations

25 YEARS PROFESSIONAL EXPERIENCE  
FREE DESIGN AND QUOTE

Servicing All W.A. Country Areas

**9622 5544**

**OXTER SERVICES**  
www.oxter.com.au  
oxter@westnet.com.au

## Wongan Hills Accounting & Tax

(Corner of Elphin Crescent & Harvest Place)

- Specialising in:
- Business Taxation & Planning
  - General Business Advice
  - GST Compliance & Advice
  - Succession Planning
  - Personal Taxation

**Office Hours:**

9.00am - 5.00pm Monday to Friday

PO Box 27  
Wongan Hills 6603

**Phone: 9671 1655**

Mobile: 0428 415 089

Email: eion@what.net.au

Website: www.what.net.au



**RSM**

Empowering you for the future.

Technology has changed agriculture and accounting dramatically but one constant over the years is the willingness of RSM accountants to travel to the family farm or business to sit down and discuss the financial affairs with you.

THE POWER OF BEING UNDERSTOOD  
ASSURANCE | TAX | CONSULTING



## ELDERS DALWALLINU FOR EXPERT AGRIBUSINESS ADVICE

Supporting Dalwallinu and surrounds with specialist knowledge, experience and advice in all areas of agribusiness.

- Rural Products
- AgChem
- Animal Health
- Agronomy
- CSBP Agent
- Clear Grain Exchange

Talk to one of our expert team today.

<b>Tom</b> 0417 253 586	<b>Clare</b> 0447 500 525	<b>Monique</b> 0456 161 063
----------------------------	------------------------------	--------------------------------

(08) 9661 2000  
dalwallinu@elders.com.au

Find us on Facebook - Elders Dalwallinu



**RSM**

**Moora**

Reagan Manns  
T 0437 165 489  
13 Dandaragan Street, Moora  
rsm.com.au/moora

**Northam**

Keiran Sullivan  
T 0419 965 015  
210 Fitzgerald Street, Northam  
rsm.com.au/northam



# Bridgestone Service Centre

## DALWALLINU

### 9661 1206

Matt Wilson

After Hrs 0467 492 576

## 1A Johnston St

### Firestone

### GOODYEAR



## Suppliers of:

Passenger, 4WD, truck & agricultural tyres

Supporters of Kalannie Football Club

## Our products & services include:

- A service vehicle available for on-site fitting and repairs
- Vulcanised and major repairs on all large tyres
- Wheel alignments
- Range of batteries
- Assorted tubes
- Full range of compressor nitto fittings and industrial brass fittings
- We also sell rubber matting



## TYRES TO SUIT ALL BUDGETS



# Who do you turn to for insurance in Kalannie?

Talk to your local broker about all things insurance today.



**Todd Bein**  
08 9690 8900

Insurance for your industry, tailored to your business.

- Agri-business
- Manufacturing
- Tradespeople
- Commercial
- Transport
- Retail
- Clubs



AFSL Number 238717  
ABN 56 009 296 824  
[cwib.com.au](http://cwib.com.au)

**Real Understanding**

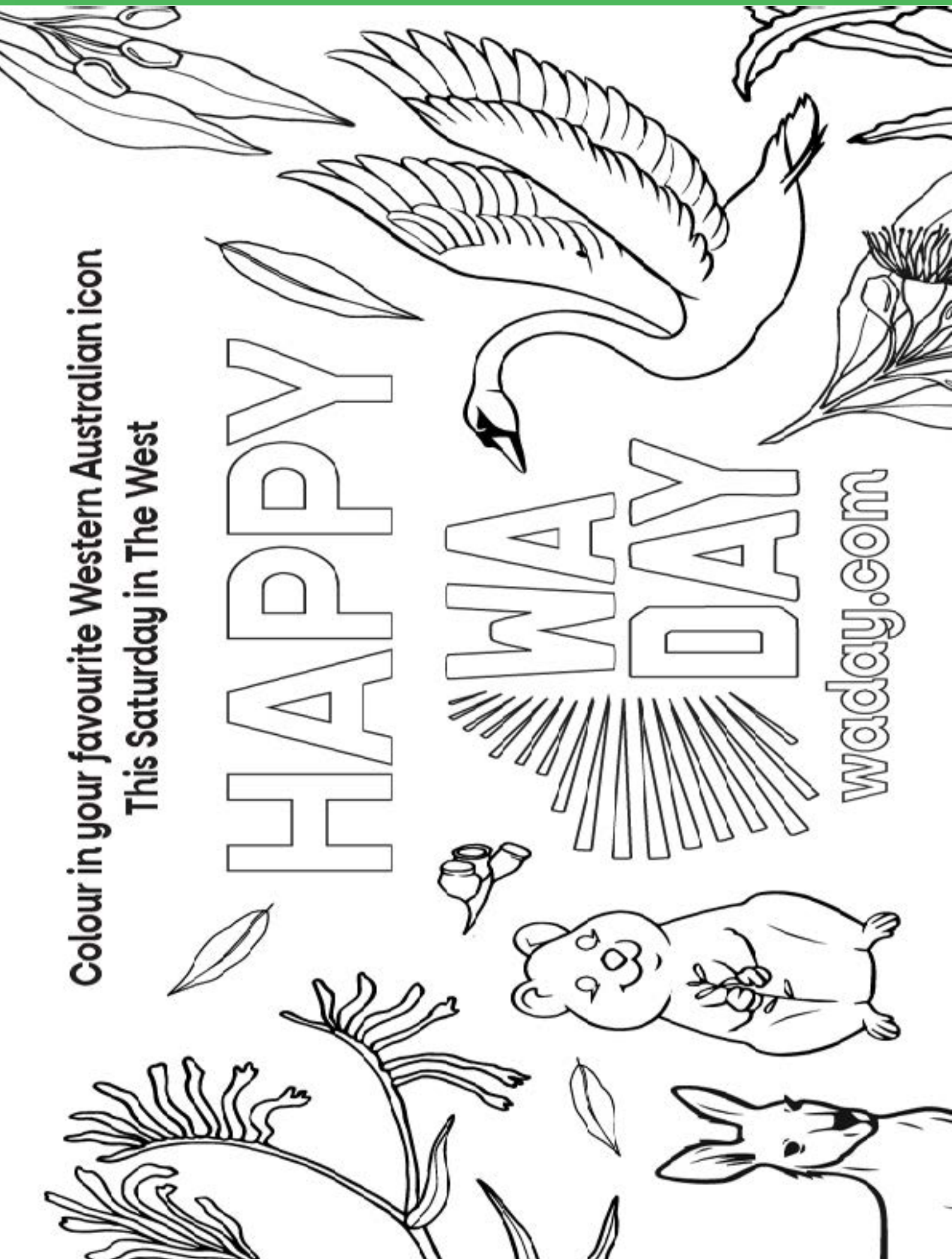


Colour in your favourite Western Australian icon  
This Saturday in The West

HAPPY

WAWAY DAY

waday.com





NATIONAL RECONCILIATION WEEK 2026

27 MAY – 3 JUNE

# ALL IN

## FOR RECONCILIATION



**TAKE ACTION**

**MAKE CHANGE**

**I'M IN**

**I'M IN**

**I'M IN**

**I'M IN**

**I'M IN**

**I'M IN**

# Community Notices



**DONATE THE CASH  
THAT'S IN YOUR  
CONTAINERS TO  
**KALANNIE P&C****

Just use our scheme ID number:

**C10350369**

**Bring your eligible containers to:**

**KALANNIE IGA CARPARK**

Look for the shuttle. Free bags located inside the store. Please place our ID number inside the bag.

## **PLEASE NOTE:**

All bags placed in the shuttles will be considered a donation to Kalannie P&C.

Collection points for personal drop offs are located in Dalwallinu and Wongan Hills.

### ELIGIBLE CONTAINERS



Most glass, plastic, aluminium, steel and paper-based cartons between 150mL and 3L .



# DALWALLINU

## H A U L A G E

**Contact: Shannon Dawson**

**Ph: 0429 922 592    Email: Shannon@dallyhaulage.com.au**

### **GENERAL FREIGHT & LOGISTICS**



**Dalwallinu Haulage has been an integral part of the Dalwallinu and surrounding Wheatbelt for over 20 years.**

**We are a family owned and run transport company who provide varying services from Perth to the Wheatbelt and the Northwest of WA.**

### **BULK END & SIDE TIPPERS**

**We pride ourselves on great service and our 'can do' attitude.**

**We are proud of the way we contribute to our community by sponsoring the local sporting clubs and supporting local businesses.**



### **LIQUID FERTILISER**



**We have the ability to load liquid & granulated fertiliser from Kwinana to your farm. Our 47ft elevator means we are able to deliver to any granulated fertiliser shed.**

**DON'T STRESS,  
we're here to keep things rolling!**



**TRACTUS**  
AUSTRALIA  
*a gripping service*

- Tyres
- Alignments
- Feild & A/H Service
- Wheels
- Repairs



**MICHELIN** **M/T** **MAXXIS** **BKT** **BF Goodrich** **Cooper Tires** **HIFLY** **DYNAMIC**

📍 19 HUGGETT DRIVE, DALWALLINU, WA, 6609  
☎ 08 9661 2222 ✉ [INFO@TRACTUS.COM.AU](mailto:INFO@TRACTUS.COM.AU)

 FOLLOW US ON FACEBOOK TO KEEP UP WITH OUR SPECIALS!

**Business hours:**

**7am – 5pm Mon – Fri**

**Open by appointment Saturday & P/H's**

**Outside these hours we will still come to your  
rescue! Don't hesitate to call 9661 2222.**

**Now that's "a gripping service"**

# Health and Wellness



When talking to the dogs doesn't cut it...



1300 17 55 94 | [ruralaid.org.au/mhwb](http://ruralaid.org.au/mhwb)

One conversation at the right time with the right person can change everything.

Rural Aid provides free emotional and mental health support to people living and working in rural and remote communities.



**Our counsellors are really good listeners too!**

We offer short term or formal counselling conversations and practical help to work with you through difficult times.

We can talk on the phone or visit farmers on their properties, meaning our counsellors are more than happy to have a cuppa and a yarn.

If you are a farmer, a farming family or you know of someone who is experiencing stress from drought, fires, floods, agri-stress, relationships, farm life in general or any other hardship impacting on your/their wellbeing, contact us for confidential support.



For further information email | [mhwb@ruralaid.org.au](mailto:mhwb@ruralaid.org.au)

1300 17 55 94 | Monday to Friday | 9am-4pm

After hours calls will be returned the next working day | If you or someone else needs immediate help, call 000 or Lifeline on 13 11 14 | If calling on behalf of someone else, make sure they're ok with it.

# Health and Wellness

## SIGNS YOU'RE ADDICTED TO VAPES

- YOU DON'T LEAVE HOME WITHOUT YOUR VAPE
- YOU GET STRESSED IF YOU CAN'T FIND YOUR VAPE
- YOU FIND IT HARD TO SAY NO WHEN OFFERED A VAPE
- YOU FEEL THE NEED TO VAPE IF YOU'RE STRESSED
- YOU AVOID PEOPLE WHO DON'T LIKE YOU VAPING
- YOU PRIORITISE VAPES, EVEN WHEN YOU'RE SHORT OF MONEY
- YOU'D RATHER GO SOMEWHERE ELSE IF A VENUE DOESN'T ALLOW VAPING

**WANT TO TAKE BACK CONTROL? GET FREE SUPPORT TO QUIT TODAY AT [CLEARTHEAIR.ORG.AU](https://cleartheair.org.au)**

**CLEAR  
THE  
AIR**

# Health and Wellness



2026 flu vaccines are available at

## Dalwallinu Medical Centre

These are funded by the government for the following groups:

- All people aged 65 and over
- All children aged 6 months to end of primary school  
*The new 'FluMist' nasal spray is available for aged 2-11 years*
- All Aboriginal or Torres Strait Islander People from aged 6 months
- Pregnant women (at any stage of pregnancy)
- Anyone 6 months and over with medical conditions which increase the risk of influenza complications.

**All of the above are available from Monday 20th April**

For everyone else, the Western Australia Government are funding vaccines during **May & June ONLY**. We encourage people to get their vaccine during this period otherwise the private fee (\$22) will be charged. These will commence on 1st May.

Flu Vaccines are available Monday & Tuesday all day and Wednesday morning

Call 9661 1203 to book now!

# Health and Wellness

## SNACK PLATE DINNERS

Mix and match what you have on hand to make a fuss-free dinner. Choose at least one item from each group to make it a balanced meal. We've provided some examples for each group, but feel free to get creative if there are other options that you enjoy.

### Protein



Cheese slices  
or cubes



Hummus



Flavoured  
tofu pieces



Yoghurt  
tub



Leftover roast  
meat slices



Boiled  
eggs



Tinned  
fish



Leftover cooked  
chicken slices  
or BBQ chicken



Beans  
and lentils



Nuts and  
seeds

### Grains



Rice



Flat bread



Couscous



Pasta or  
noodles



Wholemeal or grainy  
bread, toast, rolls



Grainy  
crackers

# Health and Wellness

## Fruit and veg



Whole fruit e.g. blueberries, grapes, peeled mandarin, strawberries



Pickled/marinated veg e.g. tinned beetroot, artichoke, capsicum, olives



Cooked corn cob, chopped into pieces



Leftover roast veg



Steamed broccoli, cauliflower, carrot, green beans, potatoes



Salad vegies e.g. carrot, celery, capsicum, snow peas, sugar snap peas, avocado, cucumber, cherry tomatoes



Frozen vegies e.g. peas, corn, carrot, green beans



Sliced fruit e.g. apple, pear, watermelon, nashi pear



# Health and Wellness



You don't have to travel for quality mental health care.

Access online psychological support with MindSpot GP.

- Free
- Clinically-proven
- Convenient



Speak to your GP for a referral to MindSpot GP

[mindspot.org.au/mindspot-gp](http://mindspot.org.au/mindspot-gp)

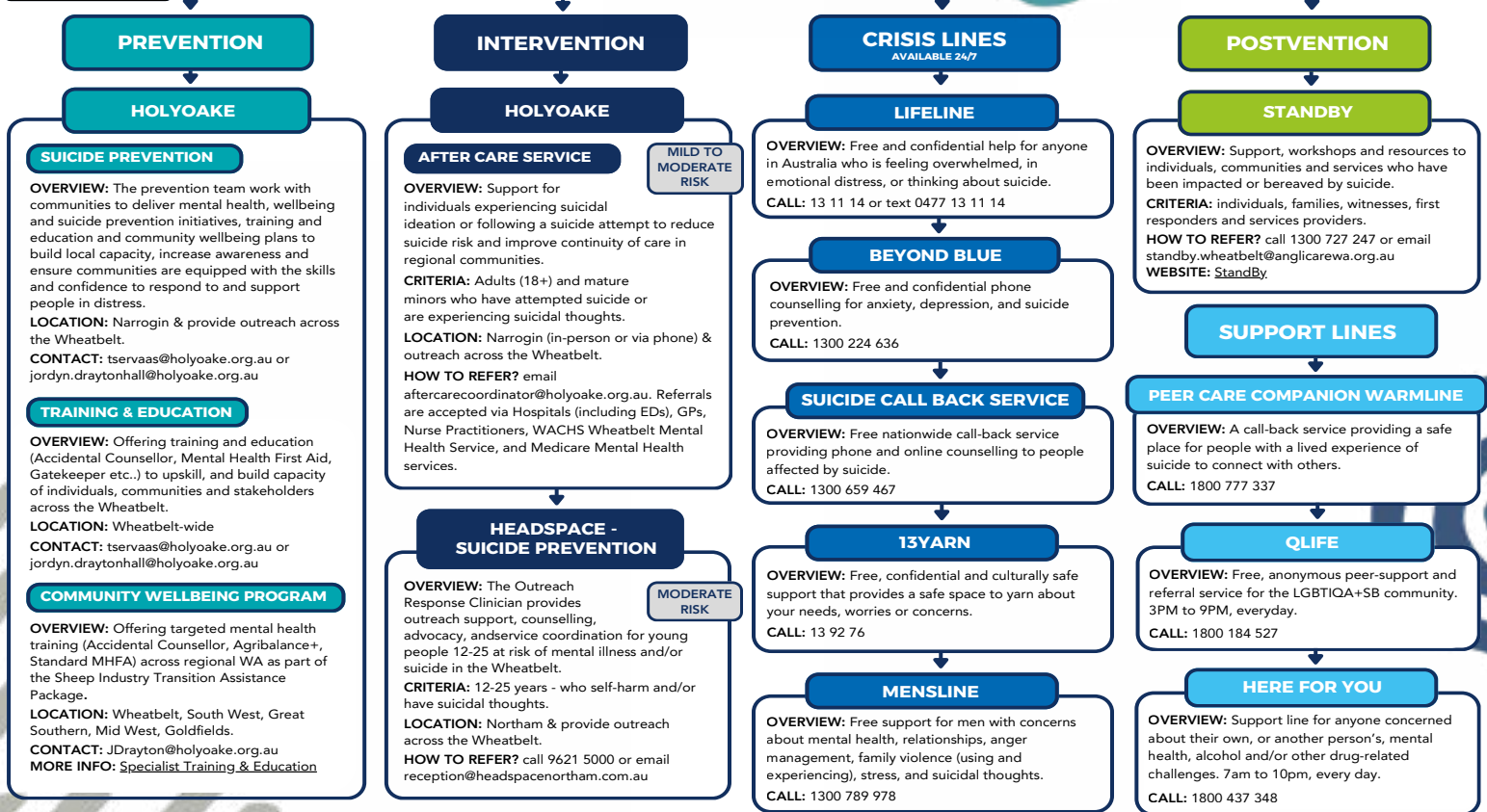


MindSpot GP is supported by WA Primary Health Alliance under the Australian government's Primary Health Networks Program

## FREE WHEATBELT SUICIDE PREVENTION, INTERVENTION & POSTVENTION SERVICES



UPDATED: MAY 2026



# Health and Wellness

## Agriculture & Agri-Business Wellbeing Factsheet

A resource for farmers, shearers, livestock transporters, as well as those involved in agribusiness.

HOLYOAKE

At Holyoake, we recognise that people involved in the agriculture and agri-business are amongst the most resilient, hard working and resourceful in our regions. This resource is a guide to provide a better understanding of stress and situational distress caused by uncertainty and challenging circumstances. It also provides tips and strategies to help navigate these challenges. It is important to talk to family members, neighbours, friends, or health professionals if you are feeling overwhelmed or find yourself struggling or in crisis. **HELP IS ALWAYS AVAILABLE.**

### MENTAL HEALTH & WELLBEING CONTINUUM:



THRIVING	HEALTHY	SURVIVING	STRUGGLING	CRISIS
"I don't have any stressors in my life"	"I have minimal stressors in my life and can easily manage them"	"I'm managing the stressors of life"	"I don't know if I can continue to manage the stressors"	"I feel like I can no longer manage the stressors"
<ul style="list-style-type: none"> <li>Growth mindset</li> <li>High levels of performance</li> <li>Fully realising potential</li> <li>Actively seeking connections</li> <li>Solution focused</li> <li>Confident and curious</li> <li>Clear and energised</li> <li>Optimal self-awareness</li> <li>High levels of motivation</li> <li>Energised by challenges</li> </ul>	<ul style="list-style-type: none"> <li>Calm and steady with minor mood fluctuations</li> <li>Able to manage stressors in life</li> <li>Consistent performance</li> <li>Able to take advice and to adjust to changes and plans</li> <li>Able to communicate effectively</li> <li>Normal sleep patterns and appetite</li> <li>Good impulse control</li> <li>Mood recovers quickly from stress</li> <li>Good self-awareness</li> </ul>	<ul style="list-style-type: none"> <li>Nervousness, sadness, increased mood fluctuations</li> <li>Inconsistent performance</li> <li>More easily overwhelmed or irritated</li> <li>Increased need for control and difficulty adjusting to changes</li> <li>Disrupted sleep and eating</li> <li>Activities and relationships you use to enjoy seem less interesting or even stressful</li> <li>Muscle tension, low energy &amp; headaches</li> <li>Low motivation and energy</li> </ul>	<ul style="list-style-type: none"> <li>Persistent fear, panic, anxiety, anger, sadness and hopelessness</li> <li>Exhaustion</li> <li>Poor performance and difficulty making decisions or concentrating</li> <li>Avoiding interaction with family, friends and colleagues</li> <li>Fatigue, aches and pains</li> <li>Restless and disturbed sleep</li> <li>Self-medicating with alcohol and/or other drugs or food</li> <li>Inability to problem solve</li> </ul>	<ul style="list-style-type: none"> <li>Disabling distress and loss of function</li> <li>Panic attacks, nightmares or flashbacks</li> <li>Unable to fall or stay asleep</li> <li>Intrusive thoughts</li> <li>Thoughts of self-harm or suicide</li> <li>Easily enraged or aggressive</li> <li>Careless mistakes and inability to focus</li> <li>Feeling numb and lost</li> <li>Withdrawing from relationships</li> <li>Dependence on alcohol, other drugs, food or other numbing activities to cope.</li> <li>Physical and emotional exhaustion</li> </ul>

# Health and Wellness

## MENTAL HEALTH AND WELLBEING TIPS:



### GET ENOUGH SLEEP AND REST

Sleep affects our physical and mental health and can be the first thing we trade in when we get busy or stressed.



### SCHEDULE TIME FOR THINGS YOU ENJOY

Balance in life is important, so taking time out for things you enjoy can make a difference to how you think and feel.



### BE ACTIVE AND EAT WELL

Our physical and mental health are closely linked, so ensure that you are exercising and eating nutritious food.



### NURTURE RELATIONSHIPS AND CONNECT WITH OTHERS

Our connection to others is what keeps us strong, especially during challenging times. Ensure you have people to connect with (face-to-face, over the phone or virtually).



### ENSURE YOU ARE ADOPTING STRATEGIES TO MANAGE YOUR STRESS LEVELS

If you are having trouble relaxing or managing intrusive thoughts, the websites below provide an array of tips and tools that can assist you.



### MAKE A 'TASKS LIST'

Break large tasks into smaller, more manageable tasks which can be prioritised in order of importance.



### FOCUS ON WHAT YOU CAN CONTROL

Direct your time, energy, and resources towards things you have direct influence over, rather than things outside of your control (weather/climate, government regulations, commodity markets).



### BRING OTHERS TO THE TABLE

Another set of ears and a logical brain can help with processing and retaining information.



### KEEP THE LINES OF COMMUNICATION OPEN

Schedule regular farm business meetings and don't avoid making decisions.



### KEEP IN REGULAR CONTACT WITH INDUSTRY PEERS, GROWER GROUPS AND CONSULTANTS

They are sources of trusted and valuable information and can also be a good social connection.



### PREPARE AND PLAN FOR THE UNEXPECTED

Contingency planning can avoid further stress.



### BE AWARE OF THE RISKS ASSOCIATED WITH BEHAVIOURS OR COPING STRATEGIES THAT ARE UNSAFE AND PUT YOURSELF AND OTHERS AT RISK

Unsafe alcohol consumption, misuse of prescription medication and use of illicit drugs.



### TAKE TIME TO PAUSE, BREATHE AND REFLECT

A simple moment of reflection helps us connect our minds with our feelings. It enables us to connect what's happening around us with what's going on in our heads and hearts. Taking the time to ask the right questions of ourselves, and time to get a thoughtful answer, gives us perspective, direction and clarity. By taking time to pause and slow down our breathing (deep circular breaths), we slow down a racing heart, reducing the symptoms of stress headaches and muscle tension.



### PARTAKE IN HELP SEEKING BEHAVIOURS

Please see below for information on Support Services and Helplines available.



### ORGANISE AN INFORMATION SESSION OR WORKSHOP:

Increasing your own and others understanding of the risks, protective factors, unsafe/risky behaviours, coping strategies, wellbeing, and community resilience is a powerful tool in improving empathy, connections and the overall safety within a community. Please contact Holyoake's Prevention Team if you would like to organise an information session or workshop for your community. Email

[JDrayton@holyoake.org.au](mailto:JDrayton@holyoake.org.au) or [Jordyn.Drayton@holyoake.org.au](mailto:Jordyn.Drayton@holyoake.org.au)

# Health and Wellness

## Support Services

### Phone & Web-based

HOLYOAKE

**000 (emergency)**

**Rural Link:** 1800 552 002

**Mental Health Emergency Response Line:**  
1300 555 788

**Suicide Call Back Service:** 1300 659 467

**Lifeline:** 13 11 14

**Lifeline Text Service:**

0477 13 11 14 (only available 6:00 pm to 10:00 pm AEST)

**Lifeline WA Grief, Loss & Separation free counselling:**  
9261 4444

**Beyond Blue:** 1300 224 636

**Kids Helpline:** 1800 551 800

**headspace (9am till 1am EST):** 1800 650 890

**Samaritans Crisis Line:** 135 247

**The Salvation Army:** 1300 363 622

**Crisis Care (Child Protection & Family Support):**  
1800 199 008

**Reachout:** [www.reachout.com](http://www.reachout.com)

**Mensline:** 1300 789 978

**13YARN:** 13 92 76

**Here For You:** 1800 437 348

**Road Trauma Support:** 1300 004 814

**Grief Line (midday to 3am AEST):** 1300 845 745

**Alcohol & Drug Support Line:** 1800 198 024 or 9442 5000

**Parent and Family Drug Support Line:**  
1800 653 203 or 9442 5050

**Narrogin & Upper Great Southern Domestic Violence Helpline:** 1800 007 570

**Wheatbelt Domestic Violence Helpline:** 1800 353 122

**Women's Domestic Violence Helpline:** 1800 007 339

**Men's Domestic Violence Helpline:** 1800 000 599

**1800 RESPECT:** 1800 737 732

**Elder Abuse Helpline WA:** 1300 724 679

**Sexual Assault Referral Centre:** 1800 199 888

**HealthDirect:** 1800 022 222

#### Holyoake

Northam: 9621 1055

Narrogin: 9881 1999

Merredin: 9081 3396

Victoria Park: 9416 4444

Midland: 9274 7055

Freecall: 1800 447 172

**Northam Medicare Mental Health Centre:**  
1800 595 212

**WACHS Wheatbelt Mental Health Service:**  
96210999

For more information  
Scan the barcode  
or CALL 9416 4444

Find us on social media @holyoake





# We're closer than you think

Use the free self service facilities at our Access Points to connect with Centrelink, Medicare and other government programs and services.

At our Access Points you can:

- use our computer to access my.gov.au and other government programs and services and to search for jobs
- use the telephone to access our self service options or to speak to us
- access free Wi-Fi 24/7 to connect to government services—no password required
- scan, print, fax and photocopy documents
- have your identity documents certified
- pick up brochures.

## Your local access point is:

Kalannie Community Resource Centre  
67 Roche Street  
Kalannie WA 6468



Australian Government  
Services Australia



servicesaustralia.gov.au

# Access Point

## At a Services Australia Access Point you can:



use our computer to access **my.gov.au** and other government programs and services and to search for jobs



use the telephone to access our self service options or speak to us



access free Wi-Fi 24/7 to connect to government services. No password required



scan, print, fax and photocopy documents



have your confirmation of identity documents certified

There are no Services Australia staff at Access Points. If you need more help, use the telephone provided to call us directly.

## Your local Access Point is:

### Kalannie Community Resource Centre

**Address:** 67 Roche Street

#### Hours of business:

Monday 9.30am - 4.30pm, Tuesday 9.30am-3.30pm,  
Wednesday 9.30am - 3.30pm, Thursday 9.30am - 4.00pm,  
Friday 9.30am - 3.30pm

To find other Access Point locations go to **servicesaustralia.gov.au**

## Self service

You can use your myGov account to access your Centrelink, Medicare and Child Support online accounts. Go to **my.gov.au**

You can also access our services through the Express Plus mobile apps.

For more information go to **servicesaustralia.gov.au/selfservice**

## Centrelink phone self service

Phone self service **136 240**  
To report your income and changes to your circumstances **133 276**

## How to contact us

Go to **servicesaustralia.gov.au** for more information about payments and services or call the listed '13' or '1800' number most relevant to your situation.

ABSTUDY	<b>Freecall™ 1800 132 317</b>
Assistance for Isolated Children	<b>132 318</b>
BasicsCard balance enquiry	<b>Freecall™ 1800 057 111</b>
Centrelink debt repayment	<b>Freecall™ 1800 076 072</b>
Child Support	<b>131 272</b>
Disability, Sickness and Carers	<b>132 717</b>
Families	<b>136 150</b>
Farmers and their partners	<b>132 316</b>
Financial Information Service	<b>132 300</b>

#### For information in other languages:

- Centrelink **131 202**
- Medicare and Child Support **131 450**

Grandparent Advisers	<b>Freecall™ 1800 245 965</b>
Income Management and BasicsCard	<b>Freecall™ 1800 132 594</b>
Indigenous Call Centre	<b>Freecall™ 1800 136 380</b>
Indigenous debt repayment	<b>Freecall™ 1800 138 193</b>
Job seekers	<b>132 850</b>
Low Income Health Care Card	<b>132 490</b>
Medicare	<b>132 011</b>
Medicare Aboriginal and Torres Strait Islander Access Line	<b>Freecall™ 1800 556 955</b>
National Redress Scheme	<b>Freecall™ 1800 737 377</b>
Older Australians	<b>132 300</b>
Students and trainees	<b>132 490</b>
<b>TTY* enquiries</b>	<b>Freecall™ 1800 810 586</b>
Complaints and feedback	<b>Freecall™ 1800 132 468</b>

Call costs from your home phone to a:

- **13 number** from anywhere in Australia may vary depending on the call plan you have chosen from your telephone service provider—mobiles may incur a higher charge.
- **1800 number (Freecall™)** are free—calls from a public phone and mobiles may be timed and charged at a higher rate.

\* TTY is only for people who are deaf or have a hearing or speech

impairment. A TTY phone is required for this service.



Australian Government  
Services Australia



servicesaustralia.gov.au



# Kalannie Community Directory

COMMUNITY GROUP	CONTACT PERSON	EMAIL
Isolated Children & Parents Ass	Jane Lang	bresland.farming@gmail.com
Kalannie Bowling Club	Andrew Moore	andrew.tracy@westnet.com.au
Kalannie Community Ass	Catherine Hudson	kca@kalannie.com.au
Kalannie Community Church	Helen Nixon	rnixon7@bigpond.com
Kalannie CRC	Catherine Hudson	kalanniecrc@kalannie.com.au
Kalannie Cricket Club - Jnr	Kate McCreery	jkmccreery.family@outlook.com
Kalannie CWA	Jodie Lyndon-James	kalanniecwa@gmail.com
Kalannie Fire Brigade	Paul Burridge	cropit2@yahoo.com.au
Kalannie Football Club	Ashley Sanderson	
Kalannie Golf Club - Men	Grant Hudson	ghuddo22@gmail.com
Kalannie Ladies Hockey Club	Ricki Fulwood	kalanniehockeyclub@gmail.com
Kalannie Netball Club	Ashley Gartrell	kalannienetballclub@gmail.com
Kalannie P&C	Gabrielle Severin	kalanniepandc@gmail.com
Kalannie Playgroup	Lexi Wasmann	lexiwasmann@icloud.com
Kalannie Sporting & Recreation Club	Melissa Harms	ksrc@live.com.au
Kalannie St John Ambulance	Stewart Benton	stewartbenton@bigpond.com
Kalannie Tennis Club	Stacey Hudson	shudson@activ8.net.au
Kalannie Young Farmers	Libby Osborne	wildaizy@hotmail.com



# Kalannie Business Directory

BUSINESS	PHONE	EMAIL
Central Wheatbelt Physiotherapy	0413 901 057	centralwheatbeltphysio@gmail.com
Gypsum Supplies	0429 662 004	daniel@gypsumsupplies.com.au
Hathway Farm Equipment	9666 2034	admin@hathwayfarm.com.au
Hazlett Corner Store	9666 2040	admin@hazlettcornestore.com.au
Kalannie Agquip	9666 2179	admin@kalannieagquip.com.au
Kalannie Caravan Park	9666 2040	admin@hazlettcornestore.com.au
Kalannie CRC	9666 2194	kalanniecrc@kalannie.com.au
Kalannie Contractors	0427 088 173	admin@kalanniecontractors.com
Kochii Oil	9667 1021	hello@fasera.com
Kalannie Post Office	9666 2040	admin@hazlettcornestore.com.au
Kalannie Seed Cleaners	9666 2075	info@seedcleaners.com.au
Kalannie Sporting & Recreation Club	9666 2032	ksrc@live.com.au
Wheatbelt Photography	0429 017 004	wheatbeltphotography@gmail.com
Wheatbelt Vet Service	Dalwallinu - 9661 1290 Wongan Hills - 9671 1108 After Hours - 0428 671 022 (emergencies only)	info@wheatbeltvet.com.au
Wheatbelt Podiatry	0459 580 005	wheatbeltpod@outlook.com

\*Don't see your community group or business listed here? Please submit info (inc phone and email details) to [kapers@kalannie.com.au](mailto:kapers@kalannie.com.au) so we can include it in the next edition.

# Media Release

ABORIGINAL  
AFFAIRS

BUSINESS  
SUPPORT

CIVIC  
INFRASTRUC-  
TURE

COMMUNICA-  
TIONS

COMMUNITY  
SERVICES

CULTURAL  
AFFAIRS

ECONOMIC  
MANAGEMENT

EDUCATION  
AND TRAINING

EMPLOYMENT

ENVIRONMENT

HEALTH CARE

IMMIGRATION

JUSTICE

MARITIME  
SERVICES

NATURAL  
RESOURCES

PRIMARY  
INDUSTRIES

SCIENCE

SECURITY

SPORT AND  
RECREATION

TOURISM

TRADE

TRANSPORT

SEARCH

CLICK ON A  
BUTTON TO  
READ MORE