

## ABOUT KALANNIE

Kalannie is a wheatbelt town located 260km North East of Perth on the edge of the North Eastern Wheatbelt. We have a proud population of about 150 people in town and about 200 in the surrounding farm lands who live up to 70km from the townsite. Our climate offers many opportunities to enjoy either cool crisp winters with sunny winter days to dry hot summers and beautiful balmy evenings. Our wildflowers are well worth a visit with the best shows generally from August through to October.

Kalannie is Corner Country. We are on the boundary of 4 aboriginal groups - the Kalaamaya, Badimaya, Yuat and Ballardong people. We are at the head waters of 3 major water catchment areas - Yarra Yarra, Moore and Vic Plains, and whilst we are located on the Eastern edge of the Shire of Dalwallinu many of our community live in the Koorda Shire to the East and the Wongan-Ballidu Shire to the South. In Noongar language Kalannie could be translated to Karl (fire) Nyininy (sitting) - it seems that visitors to our land have enjoyed this pasttime for over 50,000 years as it is still a favourite of our community. We all enjoy coming together, sitting and connecting.

Sandalwood cutters came to the area in the late 1800s, the first farm land was taken up in the early 1920s and the townsite was officially gazetted in 1929 when the first train arrived. Kalannie is the closest townsite to the Rabbit Proof Fence located only 5km to the West of our townsite. Broadacre farming to this day remains the main industry in the area, primarily wheat and sheep. The Kalannie CBH site is a super site and if you ran the wheat storage facilities from end to end it is over 1 km long. In the 80s and 90s Kalannie won awards for landcare efforts. As you drive around the district you will see thousands of oil mallees planted and kms of deep drains dug to combat dryland salinity. We are home to an eucalyptus oil industry that has developed due to passionate community members of the past.

There are a couple of accommodation options in Kalannie - a picturesque caravan park at the Western end of town amongst a lovely Gimlet stand. We also have a B&B in the old Stationmasters Cottage. A General Store is open 7 days, and our local CRC is open weekdays where you are able to access Centrelink and find information about the area. We have a Club that is open from Thursday through to Sunday who offer cool refreshments and yummy meals.



For more information contact the Kalannie  
Community Resource Centre on  
(08) 9666 2194

[kalanniecrc@kalannie.com.au](mailto:kalanniecrc@kalannie.com.au)  
[kalannie.com.au](http://kalannie.com.au)

Or drop in to the CRC in the main street.

Visitors to the Kalannie area must be aware that there are times of the year when fires are not permitted due to bushfire danger. Also 1080 poison baits are laid regularly in the region to combat Wild Dogs. Please ensure pets are muzzled or contained.

# KALANNIE



We have lots of wide open space for you to explore. From granite outcrops to salt lakes. 180 degrees of night skies that can be enjoyed in complete darkness. Visit the historic Rabbit Proof Fence, rest awhile under the shade of an oil mallee and try to find an elusive orchid or wreath leschenaultia. Retrace footsteps of those who have walked our country for thousands of years.



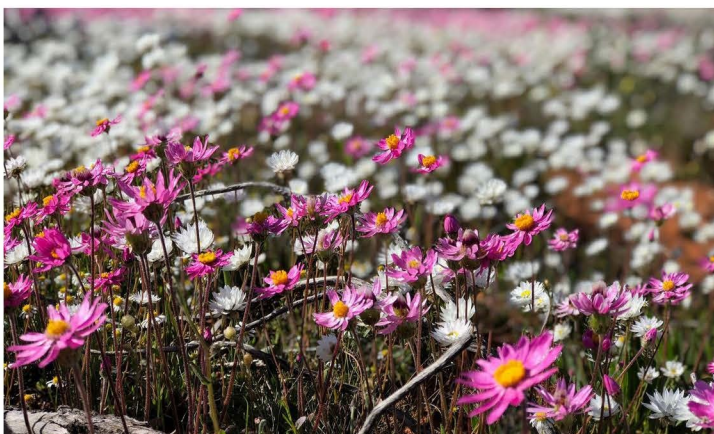
### PETRUDOR ROCKS

A popular picnic spot. Granite outcrops and tadpole pools. Many wild orchids to search for, as well as flowering shrubs. Walk to the top of the rock for a beautiful view over the surrounding farmland.



### XANTIPPE TANK

The Xantippe tank is situated in the Xantippe Nature Reserve and was constructed between 1923-1927. If you walk to the top of the granite outcrop you will see the engineering required to fill the tank as well as many wattles and wildflowers, as well as a spectacular 360 degree view as it is the meeting point of the Yarra Yarra and Moore Catchments.



### MT COLLIER DAM

One of the many developed granite rock pools that allowed early settlers to develop land into the Wheatbelt. A 400ha reserve area rich with flora and fauna.



### RIFLE RANGE

Located on the lakeside Verge of Lake DeCourcy the mounds of the original rifle range can be seen from Goodlands Road. A meander into the sometimes boggy track will take you to a pretty spot with views across the lake and a woodland rich with wildflowers.



### GOODLANDS

Goodlands is the area to the North of Kalannie on the edge of the station country. The land was released in the early 60s and marketed as "Goodlands" one would expect to entice would be farmers to the region.

### WREATH LESCHENAULTIA

The Goodlands Rd was extended through to the Great Northern Highway in early 2000s and it was discovered that grading the yellow sandplain encourage Wreath Leschenaultia to prosper. The illusive flowers are well worth a visit as they do not appear every year the surrounding bush is also rich in diversity. Travel over the cattle grid into station country to find these flowers

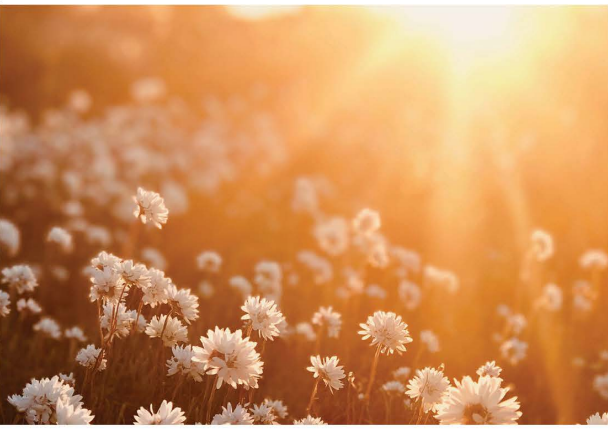
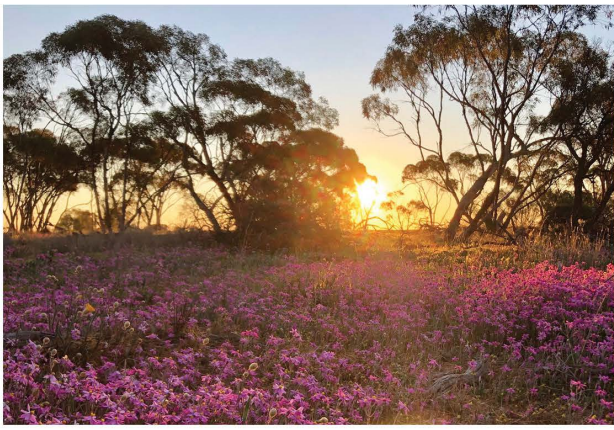


### DENTON'S RESERVE

A granite outcrop located to the North of the Kalannie Region in Goodlands located high in the landscape offers views of Lake Moore, the Emu Proof Fence and Mt Gibson and Mt Singleton to the North.





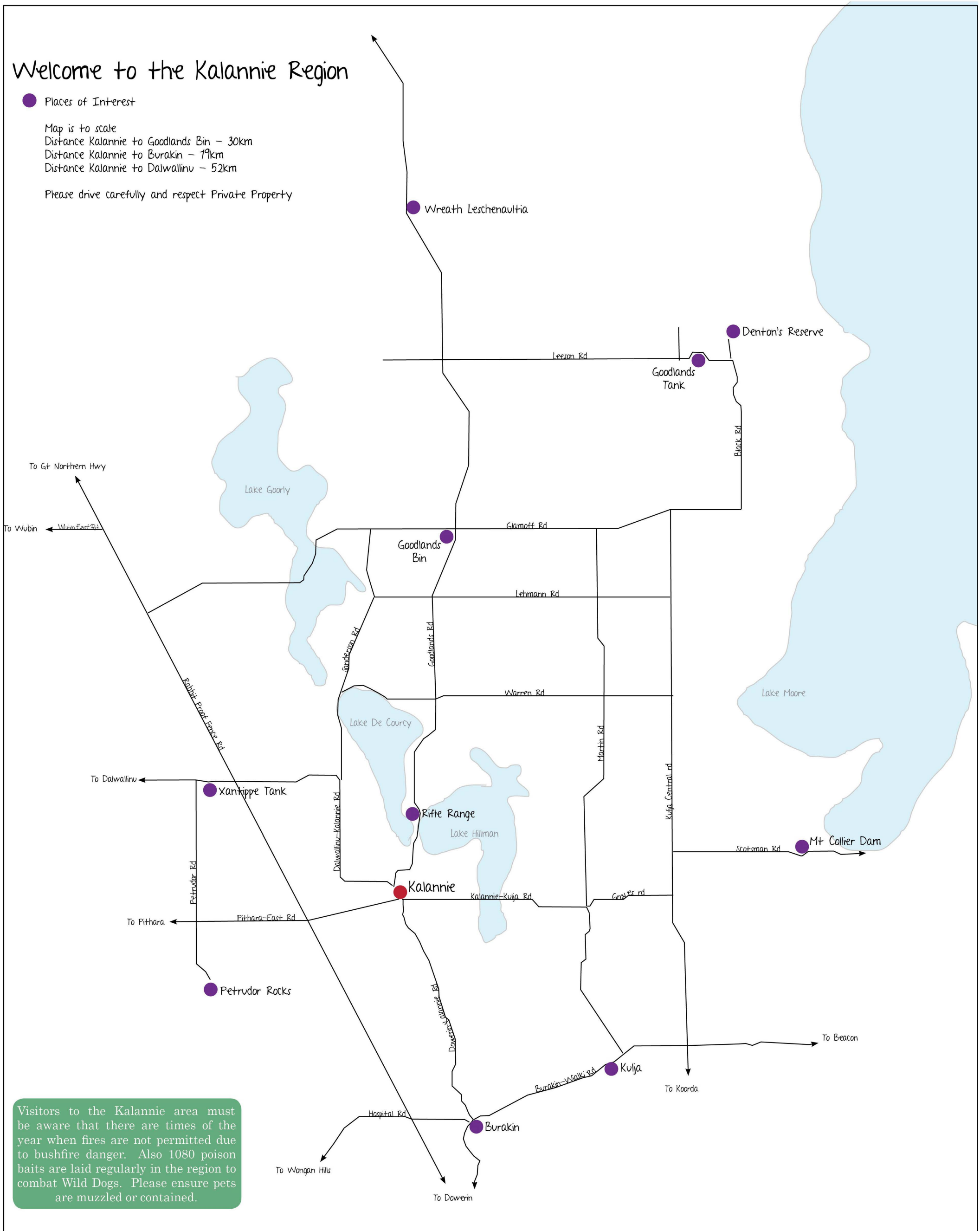


# Welcome to the Kalannie Region

● Places of Interest

Map is to scale  
Distance Kalannie to Goodlands Bin - 30km  
Distance Kalannie to Burakin - 19km  
Distance Kalannie to Dalwallinu - 52km

Please drive carefully and respect Private Property



Visitors to the Kalannie area must be aware that there are times of the year when fires are not permitted due to bushfire danger. Also 1080 poison baits are laid regularly in the region to combat Wild Dogs. Please ensure pets are muzzled or contained.